

M.C. on W. Line See 10-32-23

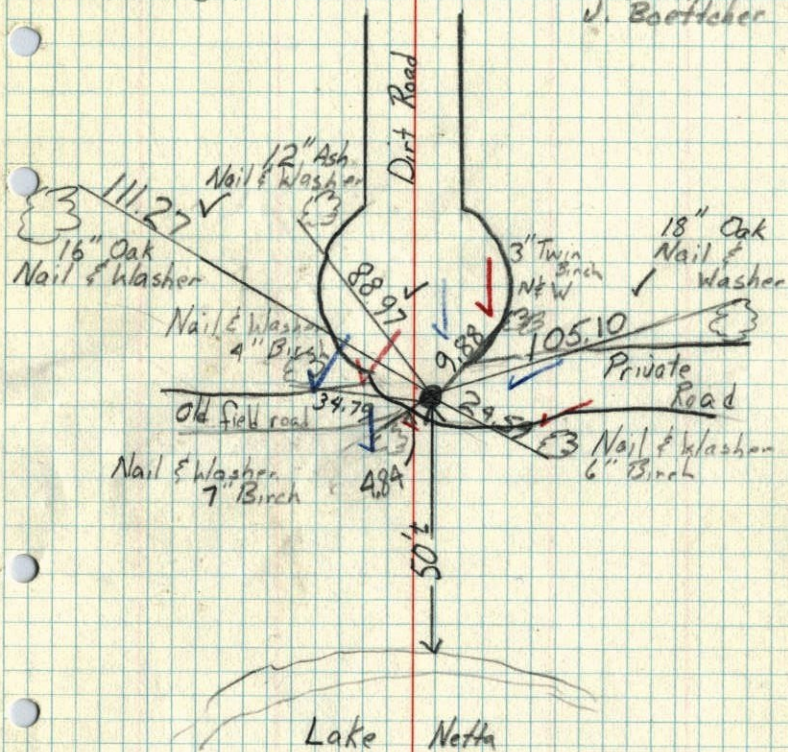
Cast Iron Monument up .05'

March 23, 1961

Freeman
Anderson

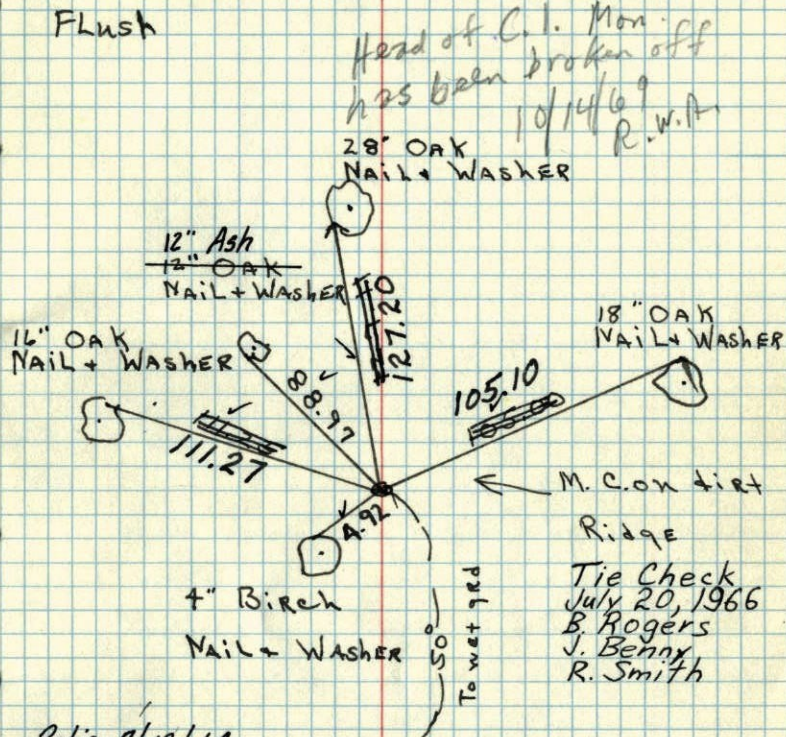
#10-70°
June 4, 1971

R. Brien
J. Baettcher



M.C. on W. line SEE 10-32-23

HAM LAKE - Found no Evidence of old
Cor. Set Cast Iron Mon. on prorated
dist on line between W 1/4 Cont
SW Cor SEC 10 - CAST IRON Mon
Flush



Head of C.I. Mon.
has been broken off
10/14/69
R.W.A.

28\"/>

Retie 7/13/64
M.D. Anderson
R. Carlson

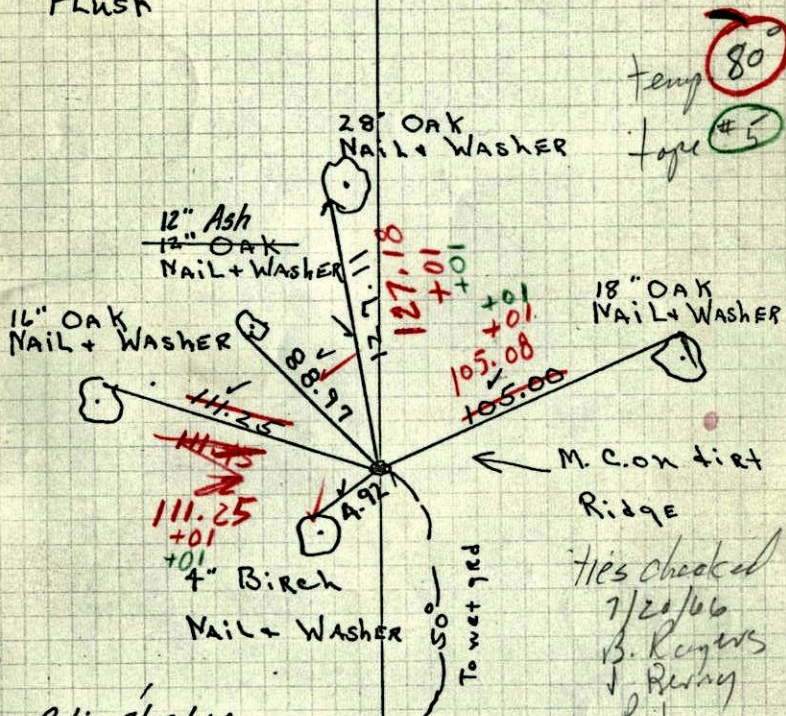
M.C. on dirt
Ridge
Tie Check
July 20, 1966
B. Rogers
J. Benny
R. Smith

TEMPERATURE CORRECTED
AND HORIZONTALLY
TAPED MEASUREMENTS

3-23-61
FREEMAN-
ANDERSON
Temp Corr for 32°
ROLAND W. ANDERSON
COUNTY SURVEYOR
ANOKA COUNTY, MINNESOTA

M.C. on W. line SEE 10-32-23

HAM LAKE - Found no Evidence of old Cor. Set Cast Iron Mon. on prorated dist on line between W 1/4 Cor & SW Cor SEC 10 - Cast Iron Mon Flush



Retie 7/13/64
M. D. Anderson
R. Carlson

TEMPERATURE CORRECTED
AND HORIZONTALLY
TAPED MEASUREMENTS

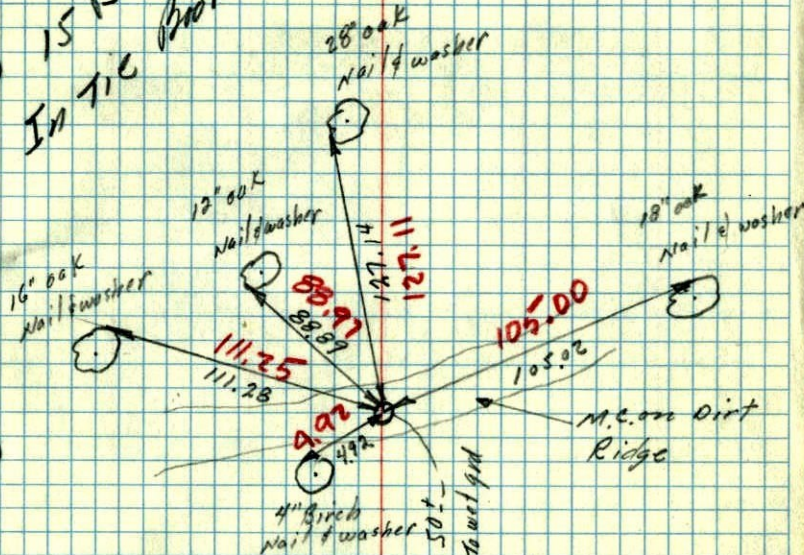
3-23-61
FREEMAN-
ANDERSON
Temp Corr for 32°
ROLAND W. ANDERSON
COUNTY SURVEYOR
ANOKA COUNTY, MINNESOTA

Temp 80°
Tape #5

M.C. on W Line Sec 10-32-23

Ham Lake - Found no Evidence of old Cor. Set Cast Iron Mon. on prorated dist on line between W 1/4 Cor & SW Cor Sec 10 - Cast Iron Mon Flush

15 B
In tie Book



Lake Net Ha TEMP. CORR. FOR
+ 32°